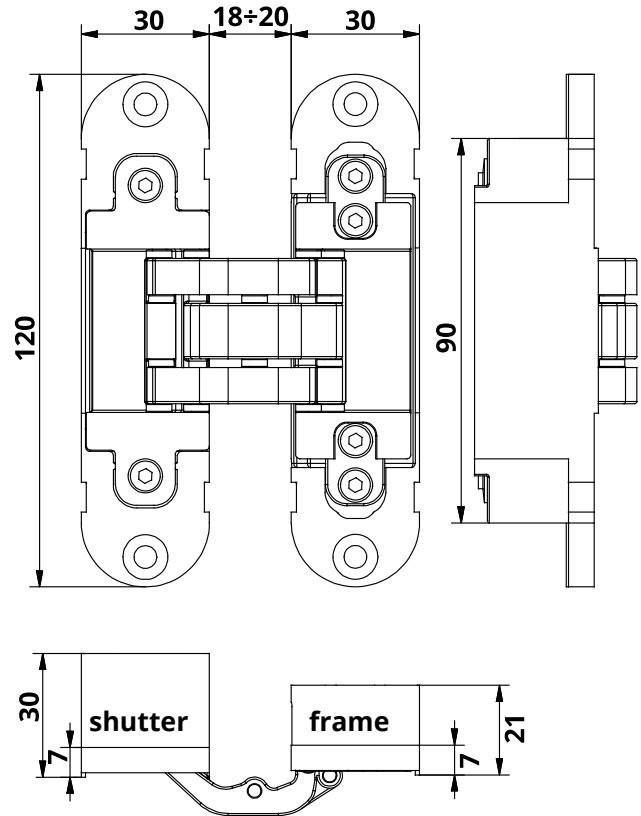


# TECHNICAL SHEET INVISACTA IN303

Concealed hinge for flush doors



## Technical features

- The hinge is suitable to be installed on doors and frames in wood and aluminium.
- The hinge can be fitted with door closing devices.
- CE certified - European Assessment Document 020001-01-0405
- Fireproof certified 45' - UNI-EN 1634-1
- Material of casing: ZAMAK.
- Material of levers: ALUMINIUM.
- Aluminium caps available to conceal the screws.
- The hinge can be fitted right and left and grants the reversibility of the door, both on vertical and horizontal axis.
- Movement on 7 junction fulcrums equipped with bearing in plastic HT with high resistance and long life.
- Equipped with 3-way adjustments that can be settled by means of just one 3 mm hex-spanner.
- Compatible with millings of IN300 and IN305 hinges.
- Patented EP-B- 2719851.

## Technical data

Capacity*	80 Kg.
Hinge height	120 mm
width shutter side	30 mm
width frame side	30 mm
Depth shutter side	30 mm
Depth frame side	21 mm
Door opening angle	180°
Side adjustment	± 1 mm
Height adjustment	± 2 mm
Depth adjustment	± 1 mm

\* Tested with 90x210 cm doors - For more information on the number of hinges to be used according to the weight and dimension of the door, please see the loading charts available on the website [www.otlav.it](http://www.otlav.it).

## Accessories

Aluminium jig	MU300120G002
Nylon jig	MUINV500G002
Door alignment device	AI300120
Caps GC300010	Same finishing than hinges
Fixing plate	NP120040H502

## Finishing

The entered images are only on illustrative purpose.  
Features and colours may differ from what represented.  
Other finishing on demand.

### IN303120V702

Satinized silver plated



### IN303120VN02

Satinized Nickel Plated



### IN303120VO02

Polished Gold

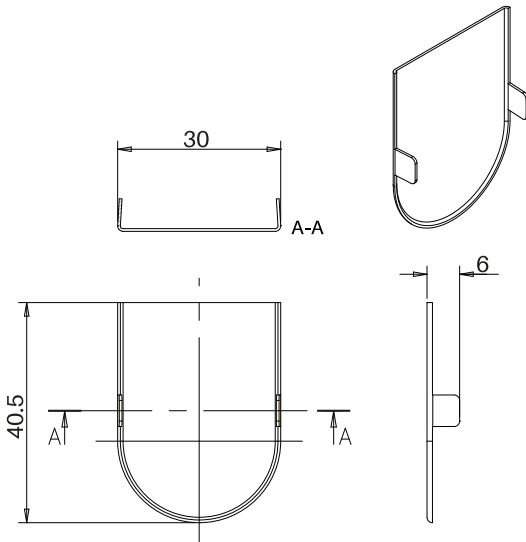


### IN303120VD02

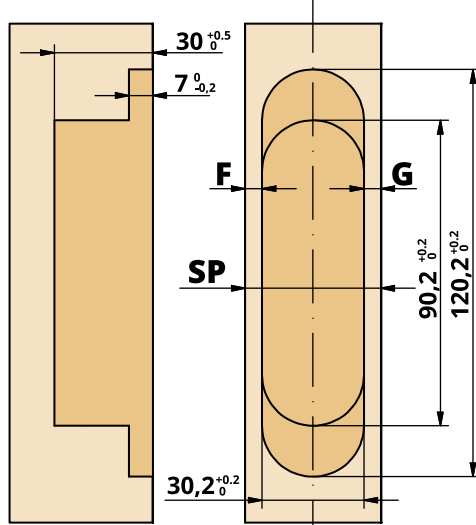
Polished Chrome



## Caps



## Milling on the shutter



mm

SP	F	G
36	3	3
37	3,5	3,5
38	4	4
39	4,5	4,5
40	5	5
41	5,5	5,5
42	6	6
43	6,5	6,5
44	7	7

## Milling on the frame

